



BARCELONA

PILOT 2. Monitoring Urban allotments.
Social issues and ecosystem services



CONEXUS

Urban nature connects us
Conectados por la naturaleza urbana
Conectados pela natureza urbana

conexusnbs.com

BARCELONA

PILOT 2. Monitoring Urban allotments. Social issues and ecosystem services

Start date: April 2020

End date: August 2024

What and Where?

Barcelona city council has promoted several plans that include urban agriculture and urban allotments and their enhancement. The Urban Agriculture Strategy of Barcelona (2019–2030) set out the importance of urban agriculture for the present, and especially the future, of the city through various perspectives.

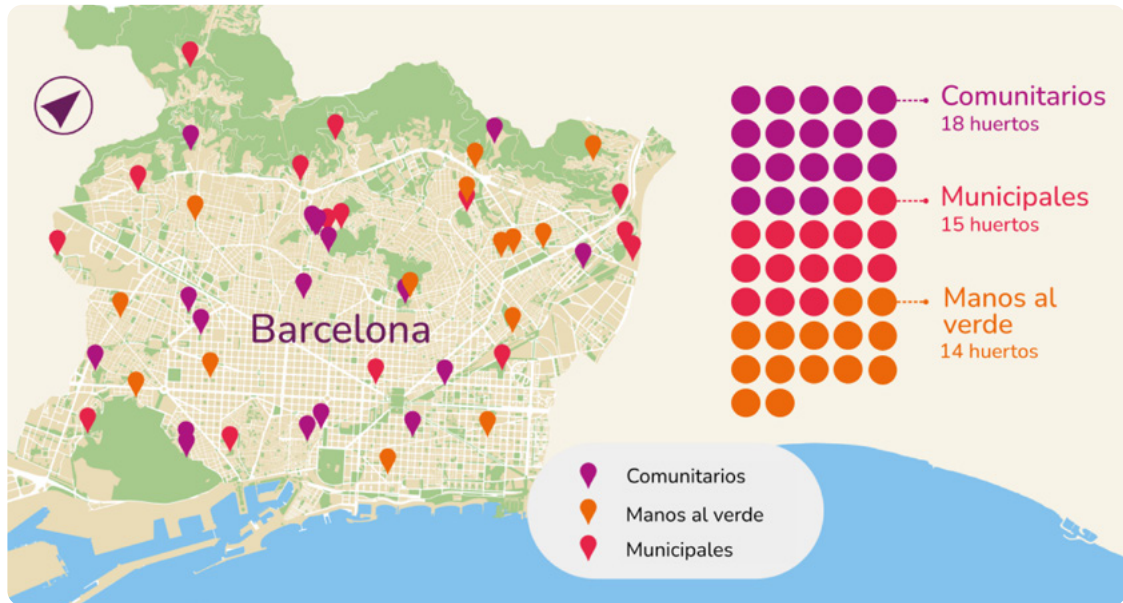
Despite this, there is an obvious lack of information and studies on urban allotments within Barcelona to provide a solid basis of data that serves the planning, promotion and management of these spaces.

In this sense, the Urban Agricultural Observatory's (Pilot 2) main objective is to establish an environmental and social database of urban allotments and analyse the environmental and social benefits that these bring to the city and its inhabitants.

Location:	Urban allotments in Barcelona (47 'pocket sites' which are public properties).
NBS type, and habitat/s:	All kind of NBS, Mediterranean habitat.
Ecosystem services:	Purification of air, climate regulation, food provision, social cohesion, environmental education, recreation experiences.
Management & maintenance:	The management and maintenance of these spaces is carried out by Barcelona City Council.



Map

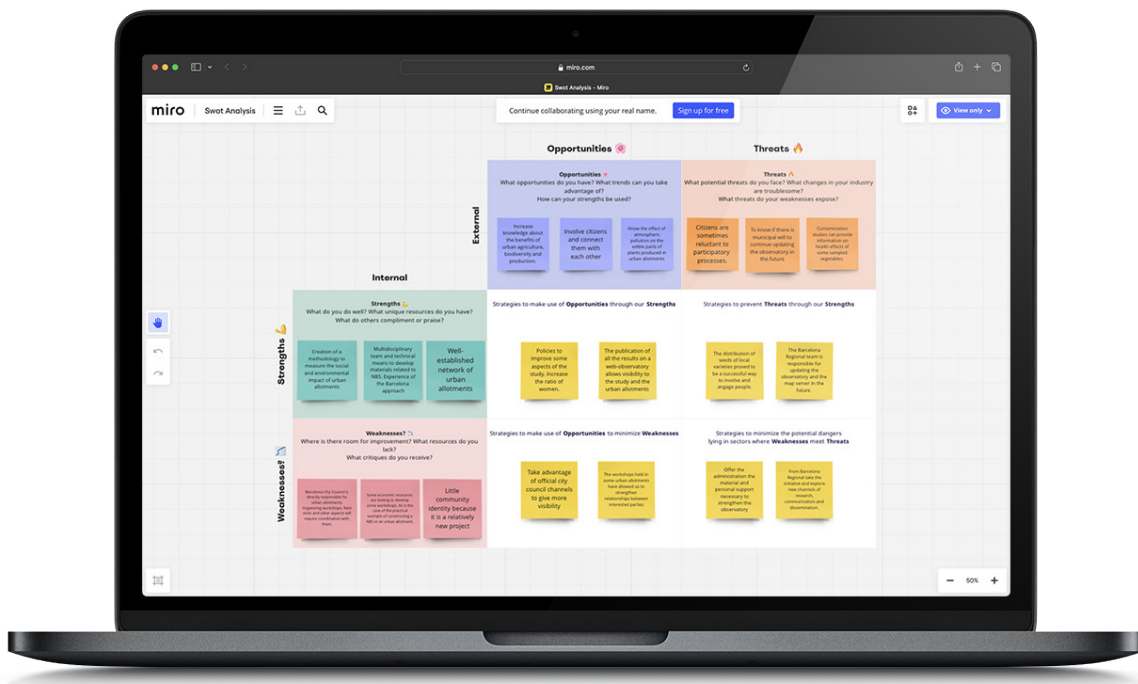


Why?

Increase knowledge about the benefits of urban agriculture, biodiversity, and production to give information to the City Council to plan and manage urban allotments.

Creation of a methodology to measure the social and environmental impact of urban allotments.
Involve citizens and connect them with each other.

You can consult a SWOT analysis in this [link](#).



When?	2021	2022	2023	2024
Previous work GIS and cabinet				
Data collection: urban allotment users				
Data collection: biodiversity				
Data collection: ecosystem services				
Data collection: food production				
Processing data				
Results				
Creation of an observatory (Dissemination of information and communications)				
Local engagement				

How?

Pilot 2 has developed a methodology based on a combination of field and desk work. Pilot 2 studied 4 different aspects of urban allotments through different methodology:

- Users socioeconomic and health perception issues
- Socio-environmental services of urban allotments
- Estimation of agricultural production
- Estimation of cultivated biodiversity

In terms of fieldwork, 242 surveys have been carried out with users and entities to evaluate users socioeconomic and health perception issues, and estimate cultivated biodiversity, asking every user what they grew every year. In addition, socio-environmental indicators were collected across 53 urban allotments through field work and GIS work. To estimate agricultural production 10 users have participated to weight agricultural production for 9 months.





So what?

The Urban Agriculture Observatory, centralised through a website, collects the results of these studies and their dissemination and communication materials, with the ultimate purpose of disseminating this information and making it readily accessible to citizens and the administration. As a result, several materials has been created:



Urban Agriculture Observatory
[Executive summary](#)

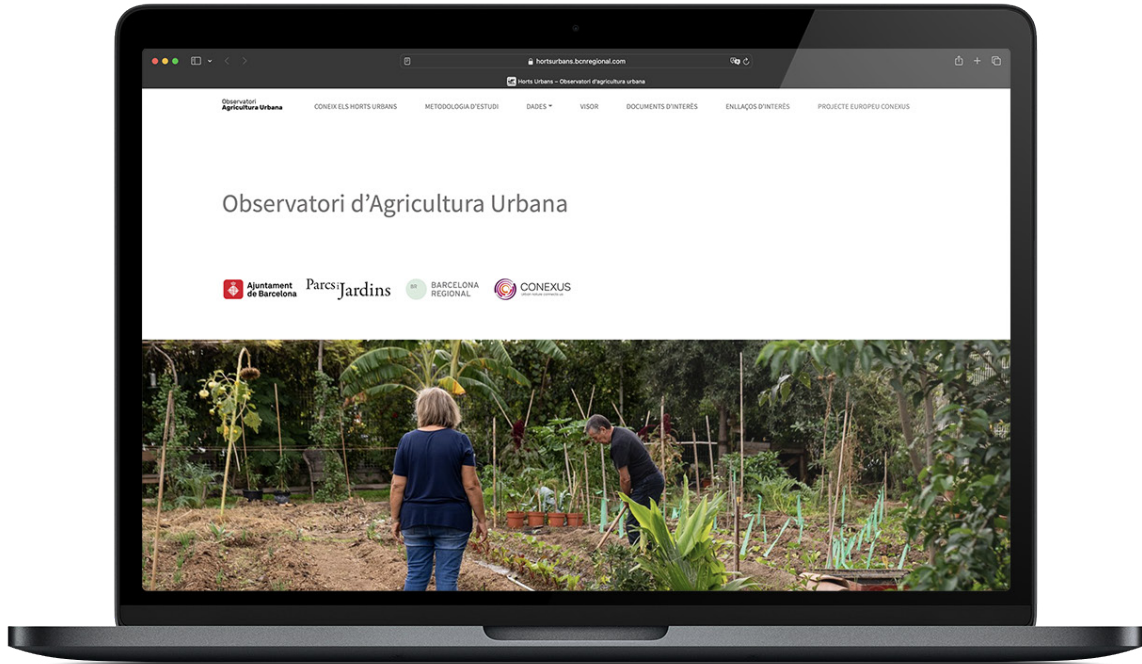


Urban Agriculture Observatory
[Conexus version](#)



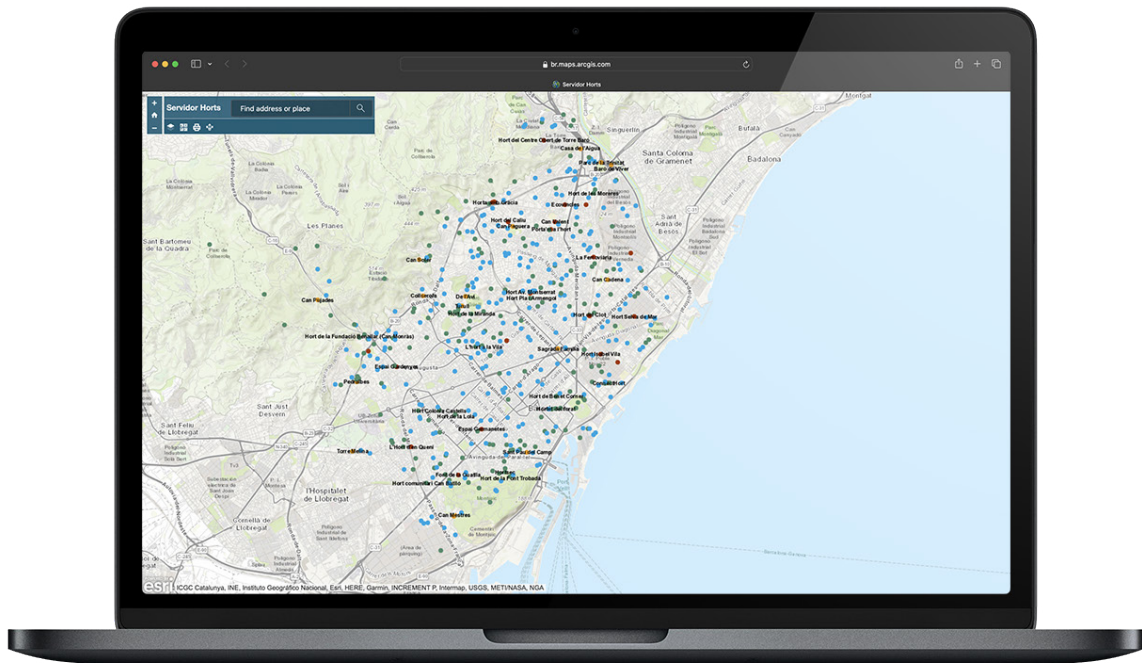
Urban Agriculture Observatory

[Website](#)



Global map of the green space system

[Interactive map](#)



Regarding the indicators used in Pilot 2:

	Municipal urban allotments	"Mans al verd" Urban Allotments	Community urban allotments
Number of species cultivated	87	81	99
Average number of active users	38	19	27
Average number of biodiversity structures	6.1	3.5	4.8

Agricultural production (Municipal urban allotments):

0,98 kg/m² urban allotment/month, which would cover the vegetable needs of 5.479 people in a year.



Project Partners



CONEXUS
Urban nature connects us

 [instagram.com/conexusnbs](https://www.instagram.com/conexusnbs)

 twitter.com/conexusnbs

conexusnbs.com



This project has received funding from the European Union's Horizon 2020 research and innovation programme under grant agreement no. 867564