

# Castletroy Greenway Nature Park



## Project Details

Location: Castletroy, Limerick  
Typology: Landscape, Public Space  
Year: 2021 - ongoing  
Area: 2 ha



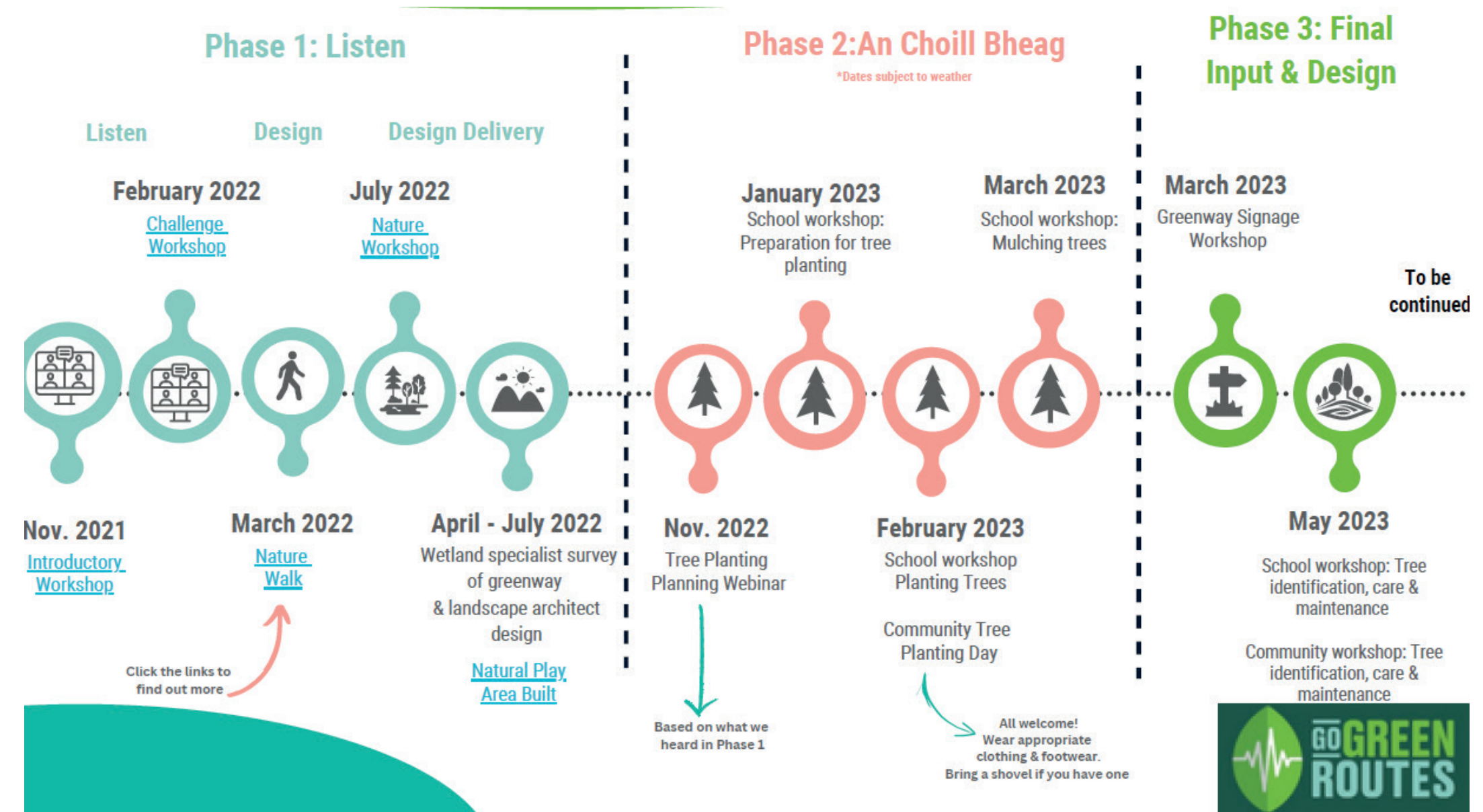
As part of a GoGreenRoutes project, Limerick City & County Council enabled this community led open space design based on Nature Based Solutions (NBS).

Dr. Sarah O'Malley (Limerick City & County Council) guided the project from its onset to create a sustainable, vibrant and educational urban 'Greenspace', providing opportunities for social engagement, contact with the natural environment and active recreation, as well as enhancing local biodiversity and creating ecological connectivity.

The site is located along a NTA founded ActiveTravel route, the Castletroy Greenway, completed in 2021. It originally consisted of artificially raised and compacted ground including a number of mature ash trees in serious decline.

A series of public consultations and workshops took place, discussing challenges, identifying goals and developing the design with the help of external consultants, specialist and designers.

Following initial workshops on design, challenges and visions resulting in an outline design, further community based workshops fed into the project. A community-led 'Bio-Blitz' in spring 2023 enabled citizen scientists and volunteers to evaluate the biodiversity on site and initiate measures for enhancing it. The community recorded 148 different species in two hours which were submitted to the National Biodiversity Data Centre. A small native woodland was planted, mentored by An Choill Bheag, an initiative of LEAF Ireland and the Environmental Education Unit of An Taisce.





# Castletroy Greenway Nature Park



## Project Details

Location: Castletroy, Limerick  
Typology: Landscape, Public Space  
Year: 2021 - ongoing  
Area: 2 ha

NBS were the guiding principle from the onset of the project and were implemented in both physical form and action oriented.

Elements include:

- SUDS features such as rain gardens and swales
  - Recycling of all parts of removed trees providing seating, ground cover for paths and play areas, play equipment and sculptures
  - Leaving the majority of the site for natural re-colonization by local flora
  - Minimizing imported materials
  - Creating play opportunity through modeling of existing ground
  - Re- using disposed elements from other parks
  - Improving biodiversity by native woodland and hedge planting
  - Community engagement and facilitating citizen scientists
  - Local native flora and fauna artwork on the path labelled in English and Irish
- Construction started in 2022, with the first phase being completed in 2023.

